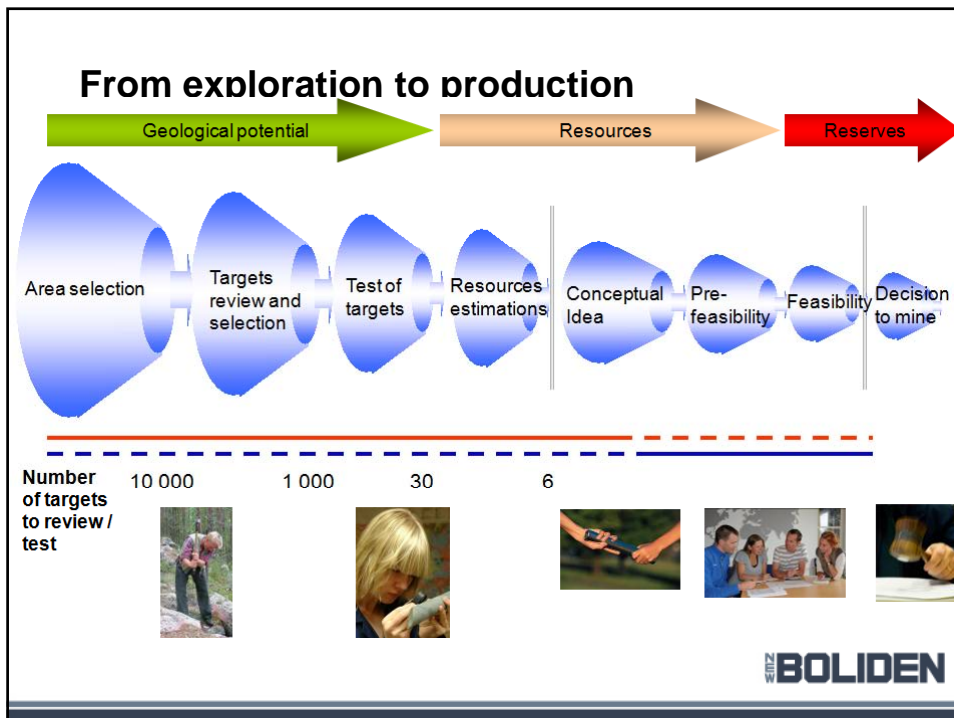




**Capital markets day
2 September 2009**

From Exploration...
Pierre Heeroma,
 Exploration manager



Exploration - main focus

- Near mine exploration to add on mineral resources to existing mining areas during the coming 5 years.
- Field exploration in the vicinity of our producing mines.
- Acquisitions of advanced projects/deposits/mines.
- Last 12 months: adjusted expenditures level.



BOLIDEN

Enhet/verksamhet

Exploration areas

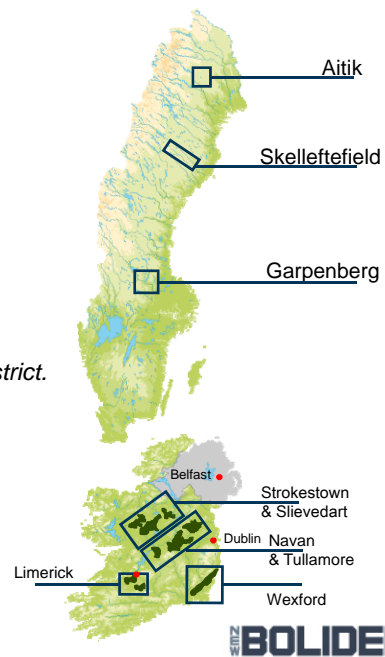
Sweden:

- The Skellefte Field (Zn, Cu, Pb, Au),
- Dorotea (Zn, Cu, Pb),
- Bergslagen (Zn, Pb) and
- Aitik (Cu, Au, Mo)

With initial special effort in the Skellefte District.

Ireland:

- Tara,
- Limerick (Zn, Pb)
- Wexford and Longford-areas



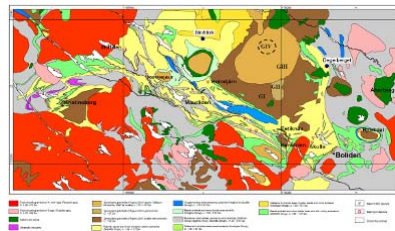
BOLIDEN

Enhet/verksamhet

Airborne Geophysics

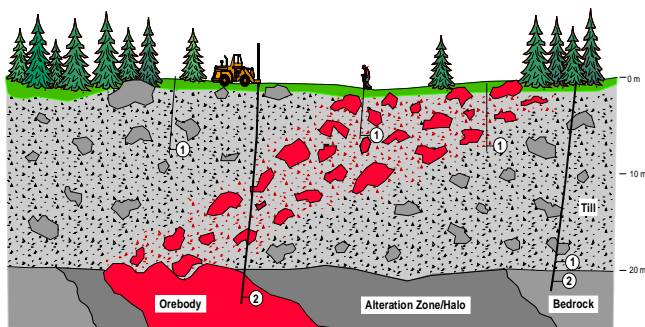


Regional Geology



BOLIDEN

Geochemical surveys



- Sampling with tractor
- Sampling with hand held equipment
- ① Till samples
- ② Bedrock samples



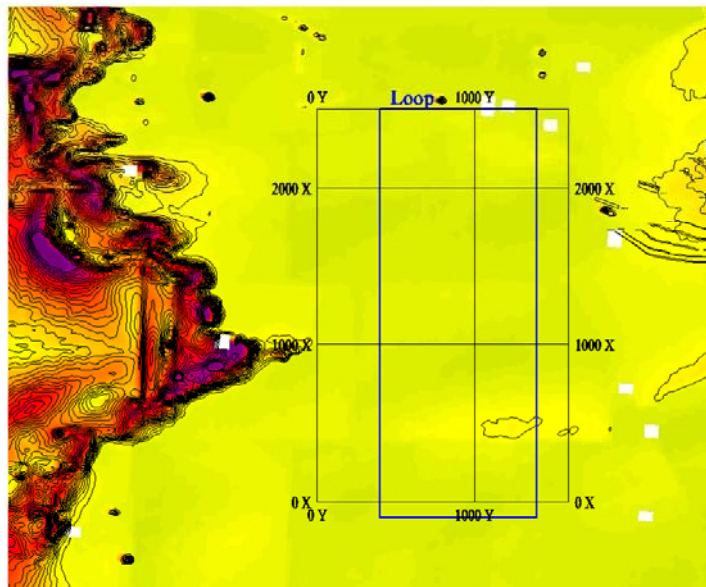
BOLIDEN

Boliden's EM34 - Ground electromagnetic survey



BOLIDEN

Enhet/verksamhet



KRISTINEBERG

EM3
220Hz Polcellips

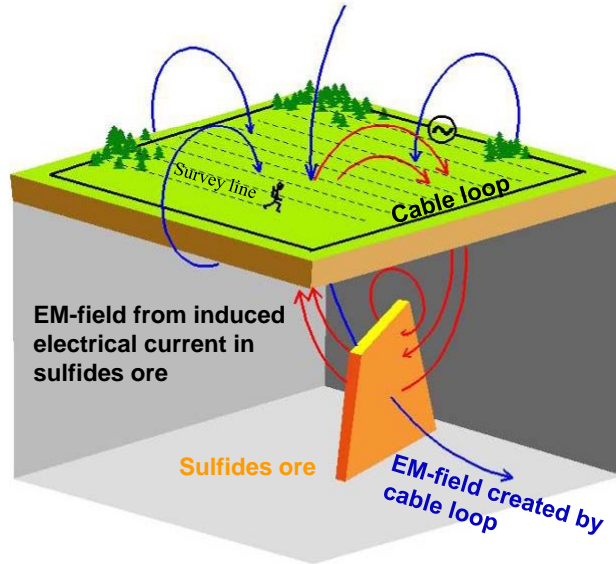
Mätt: 1992-96

Anomalistyrka

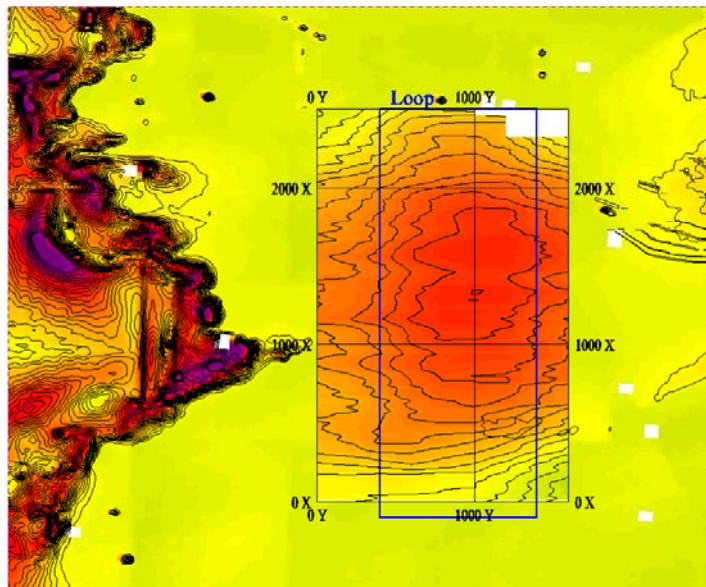


BOLIDEN

Electro-magnetic survey - Boliden's EM34



BOLIDEN

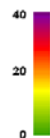


KRISTINEBERG

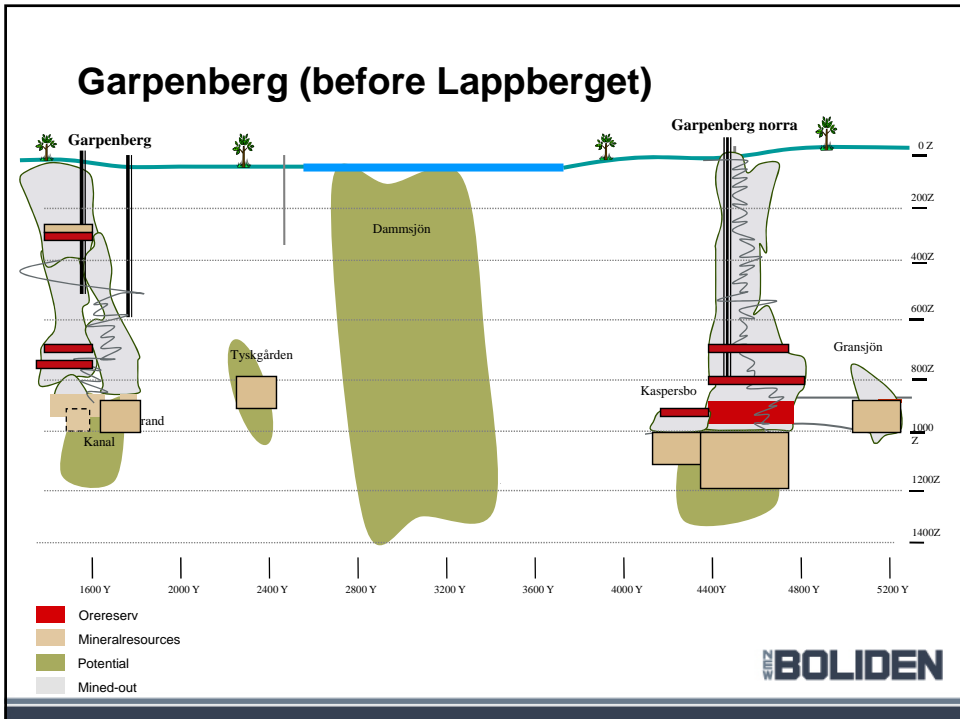
EM34 Zre21
Zre(220Hz)-Zre(44Hz)

Mätt: 2004

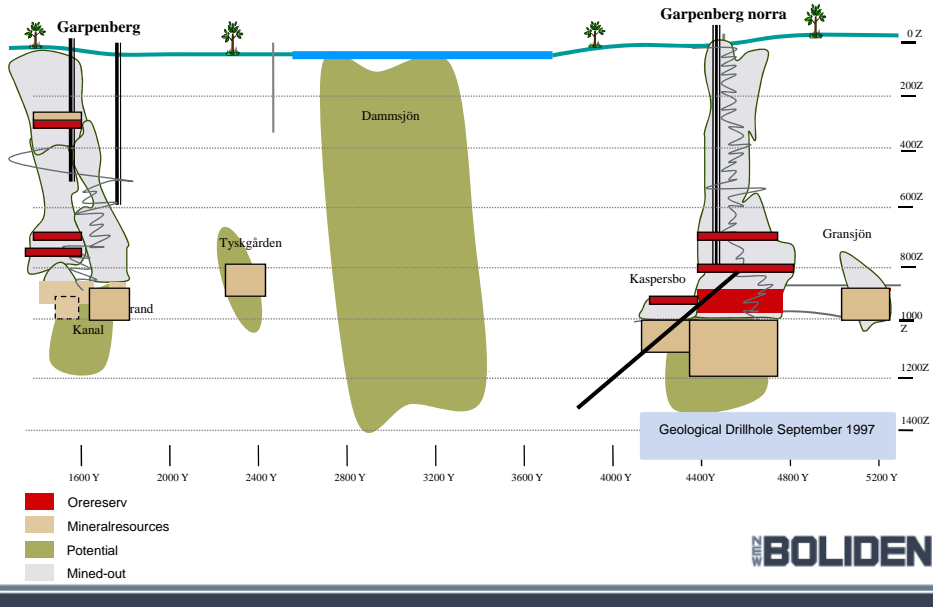
Anomalistyrka



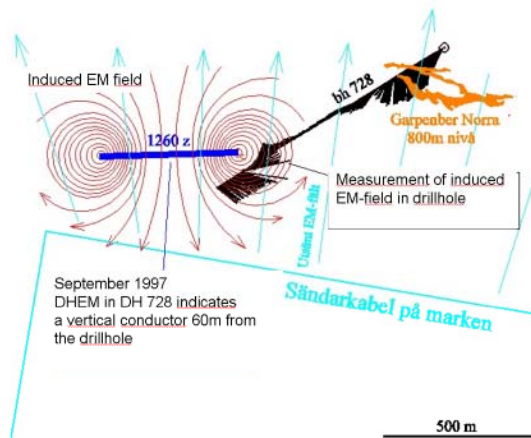
BOLIDEN

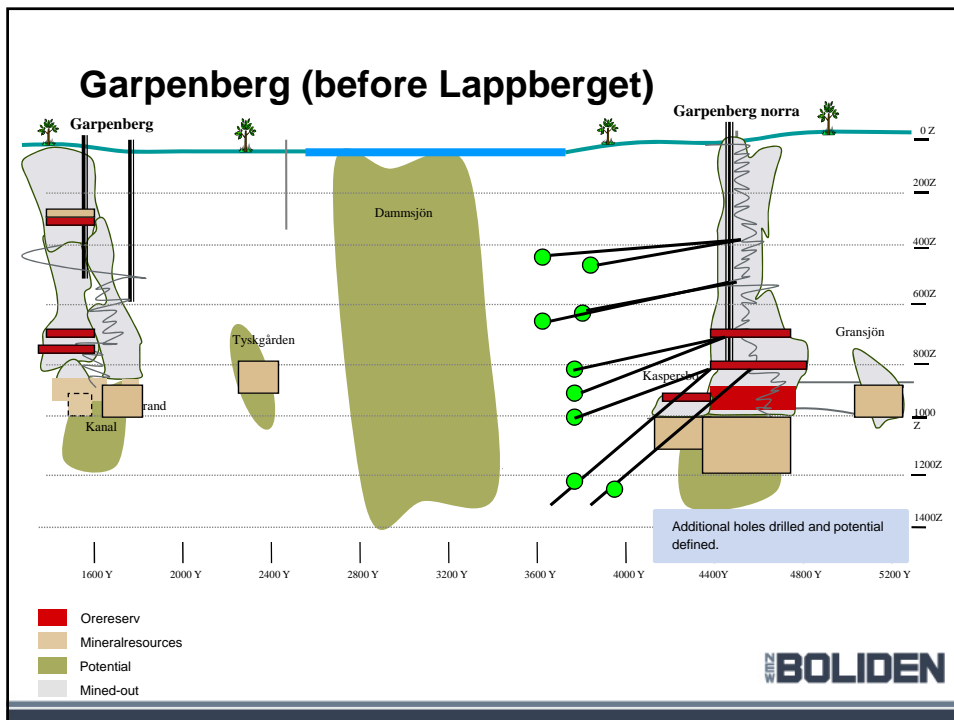
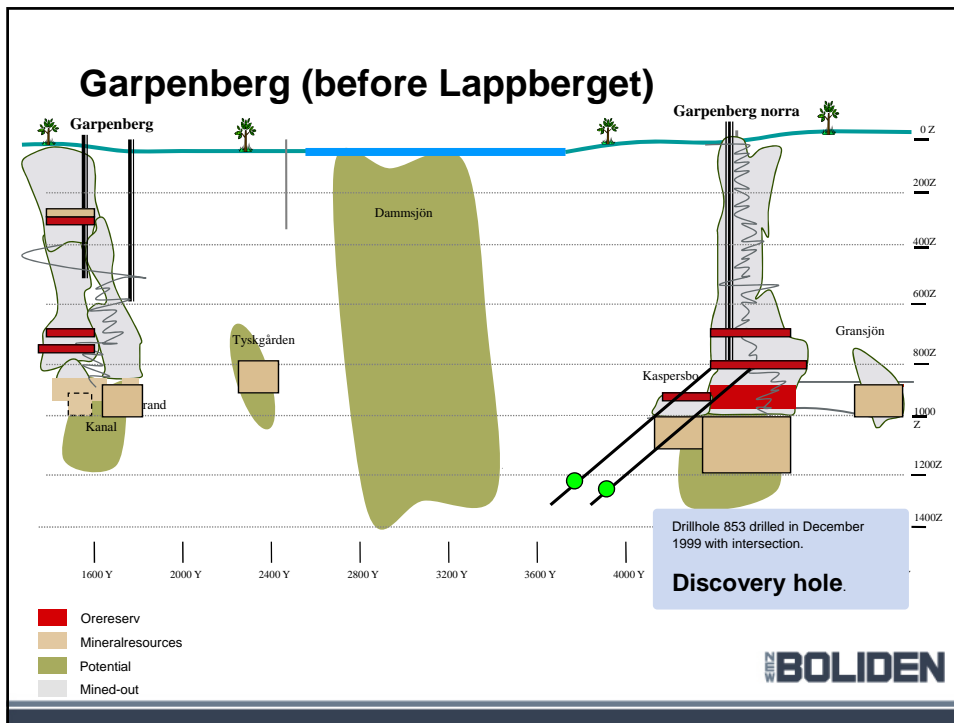


Garpenberg (before Lappberget)

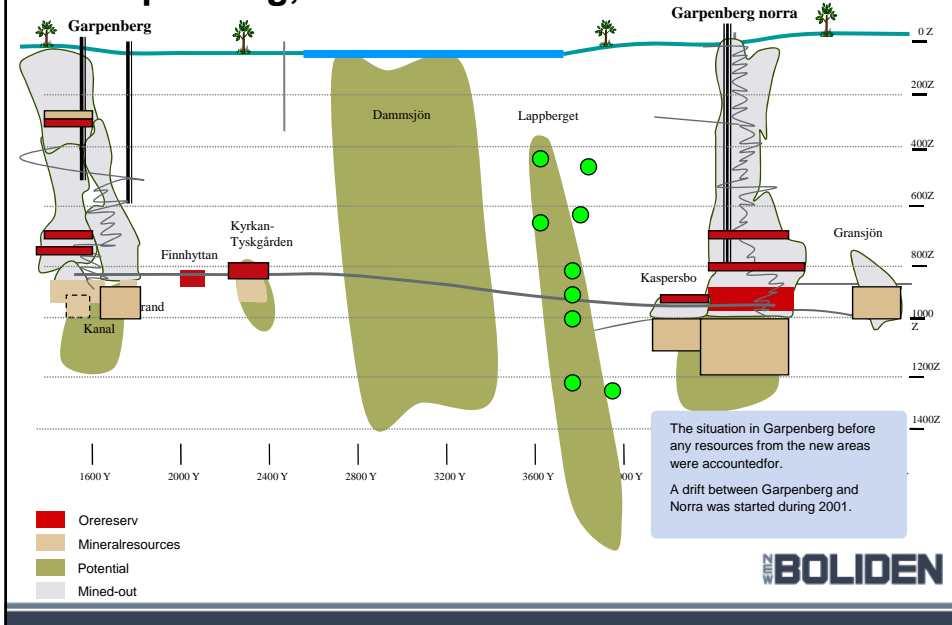


Garpenberg. Top view: first indication of Lappberget.

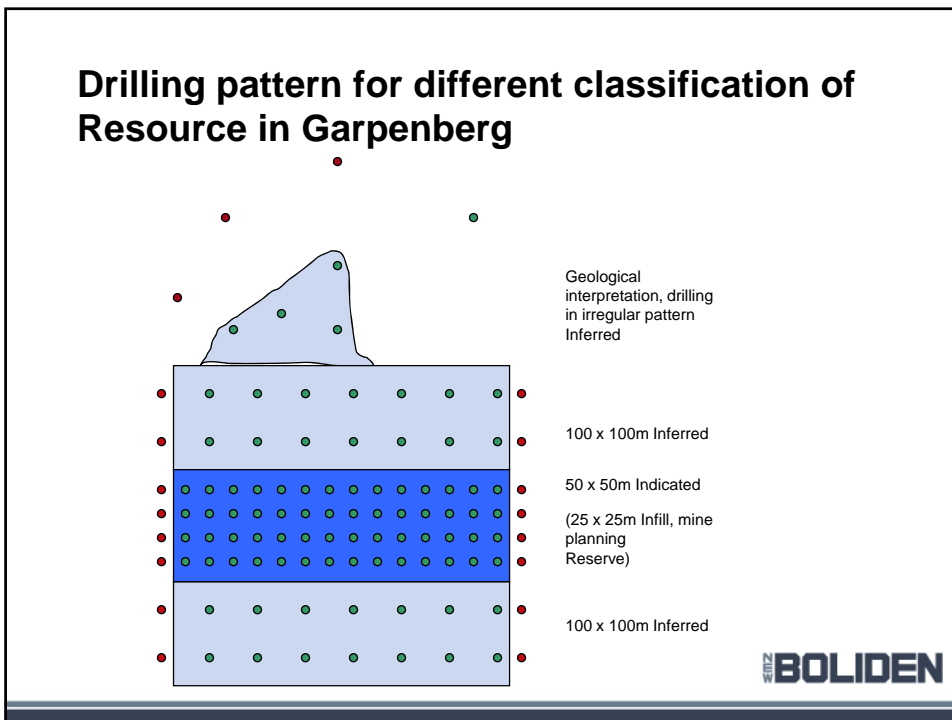


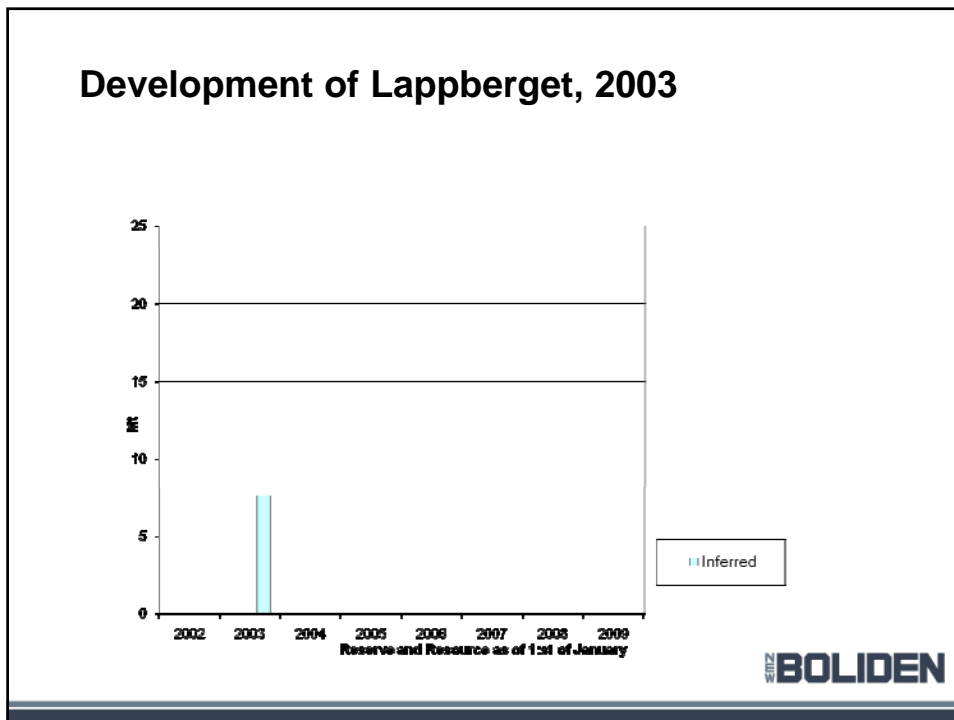
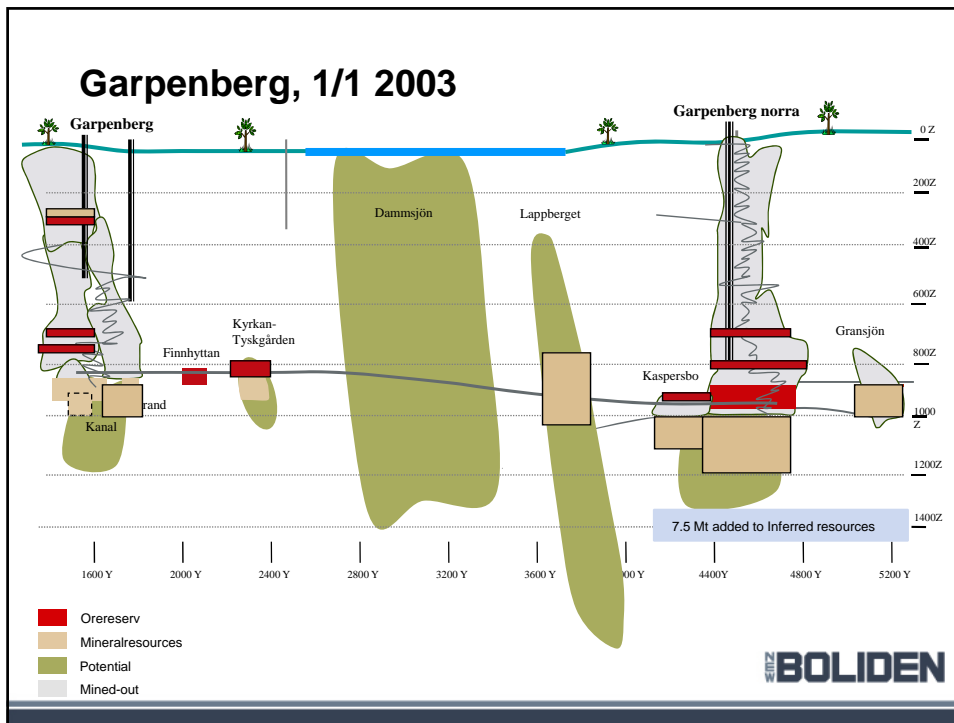


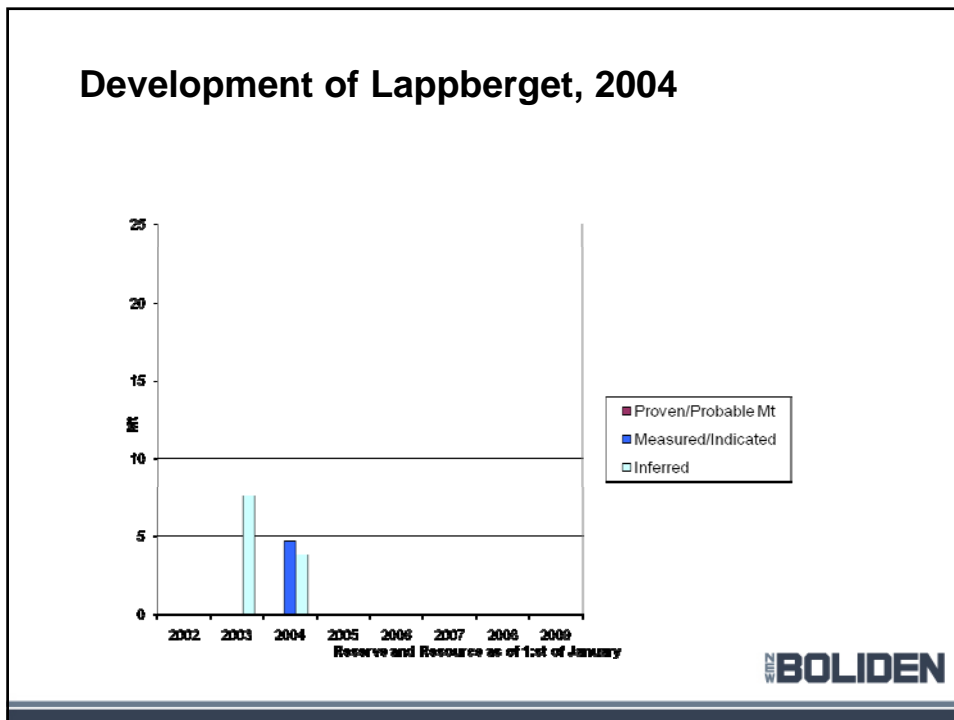
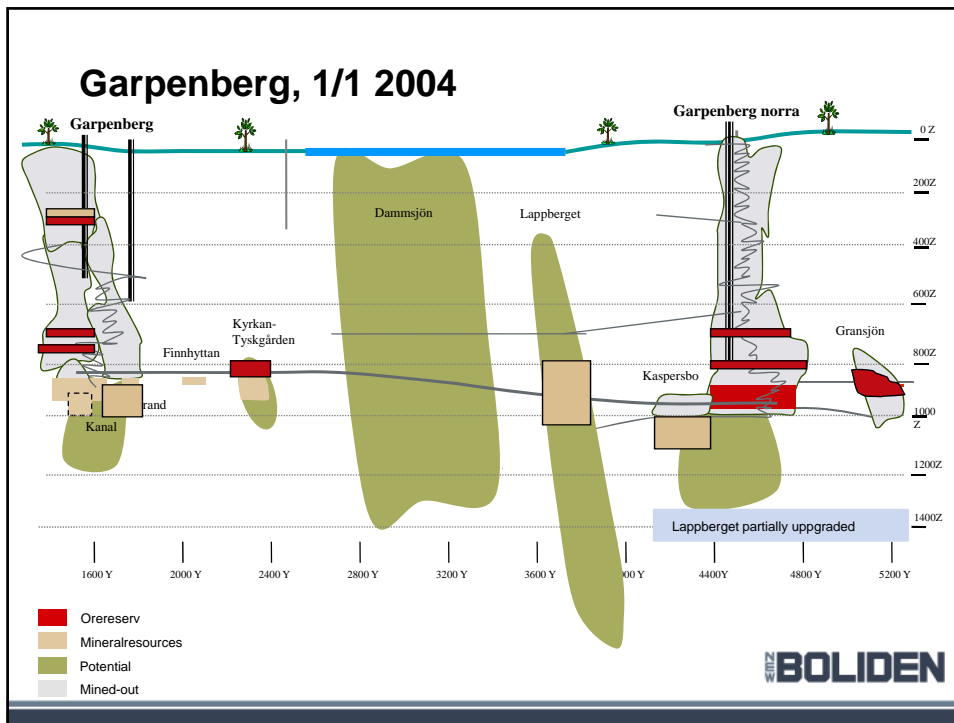
Garpenberg, 1/1 2002

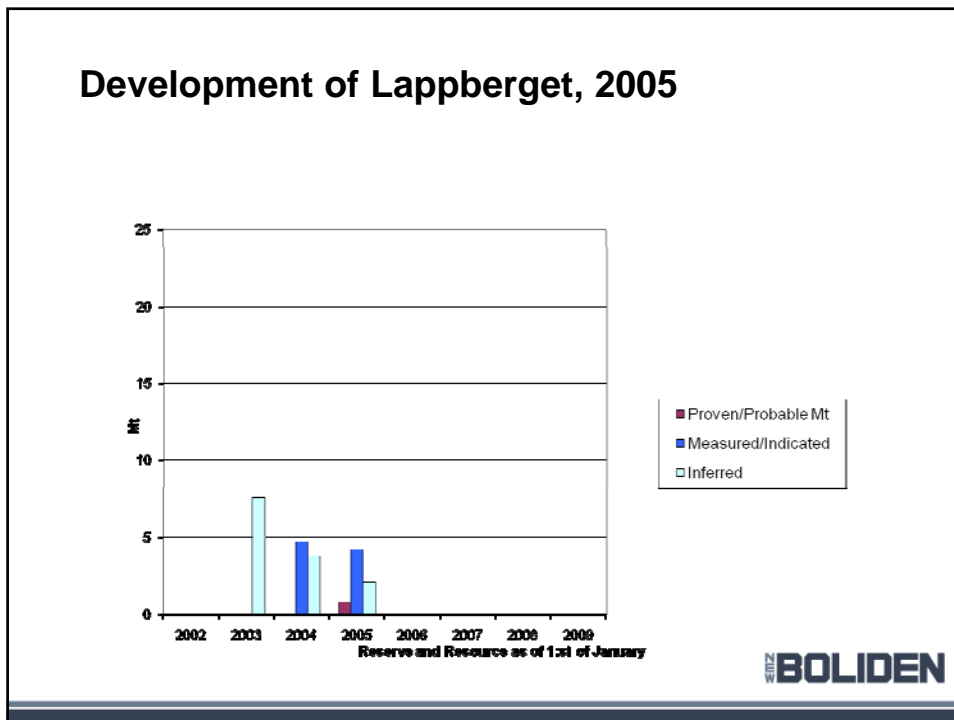
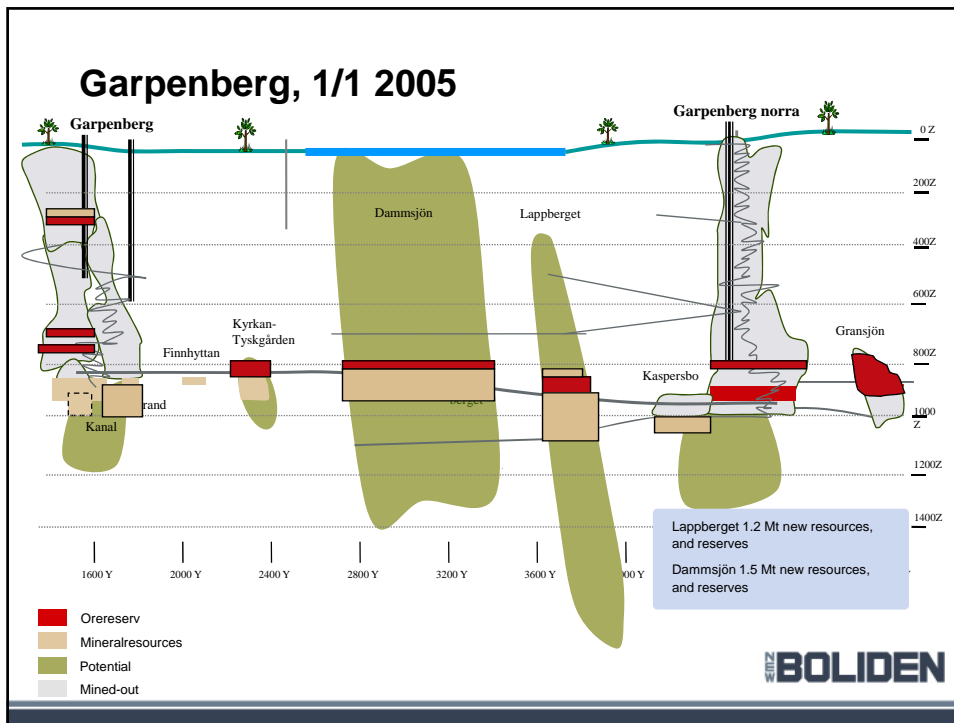


Drilling pattern for different classification of Resource in Garpenberg

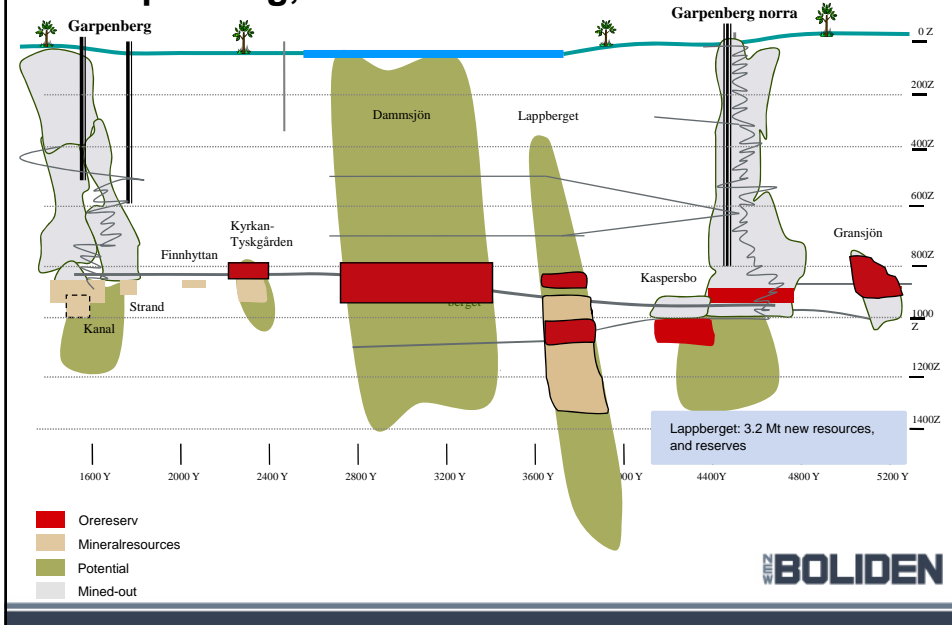




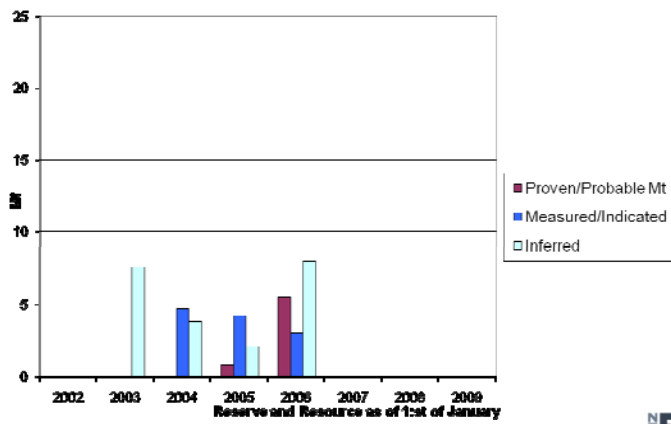


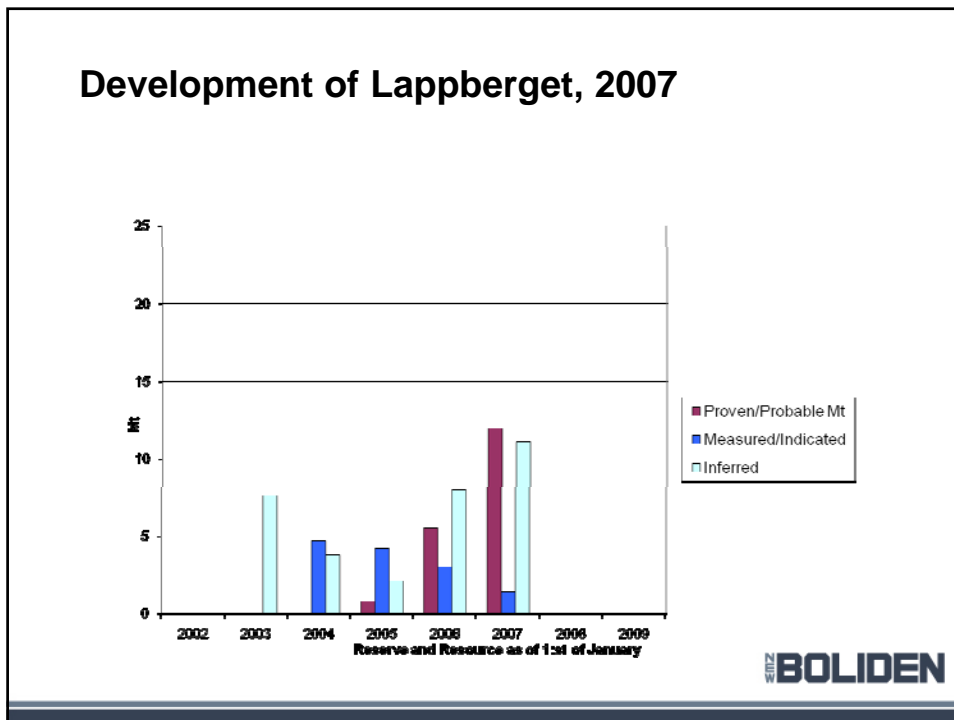
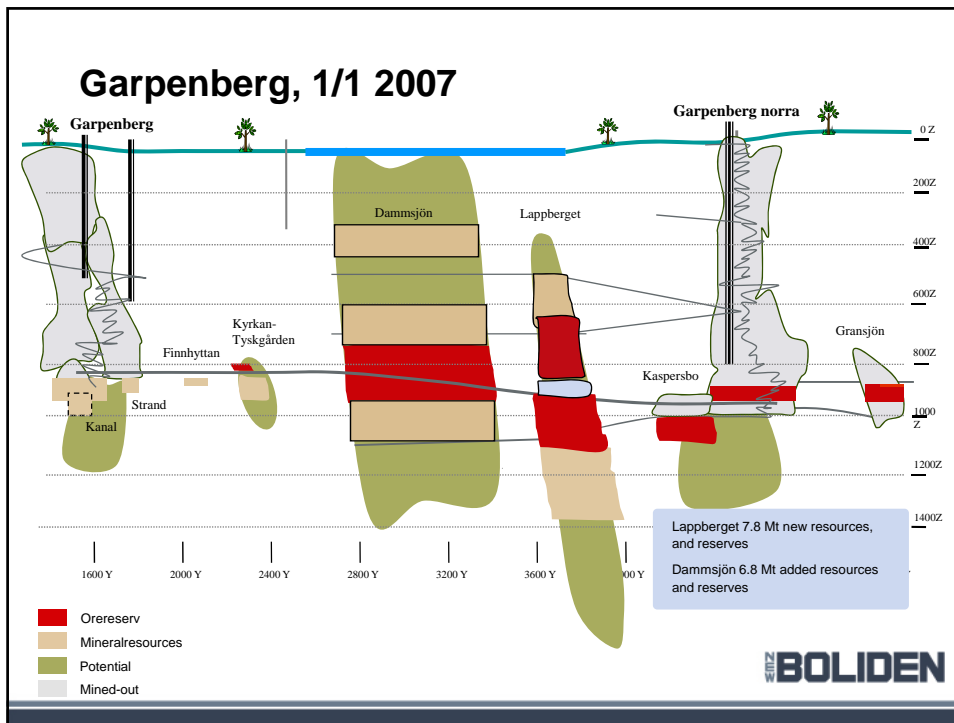


Garpenberg, 1/1 2006

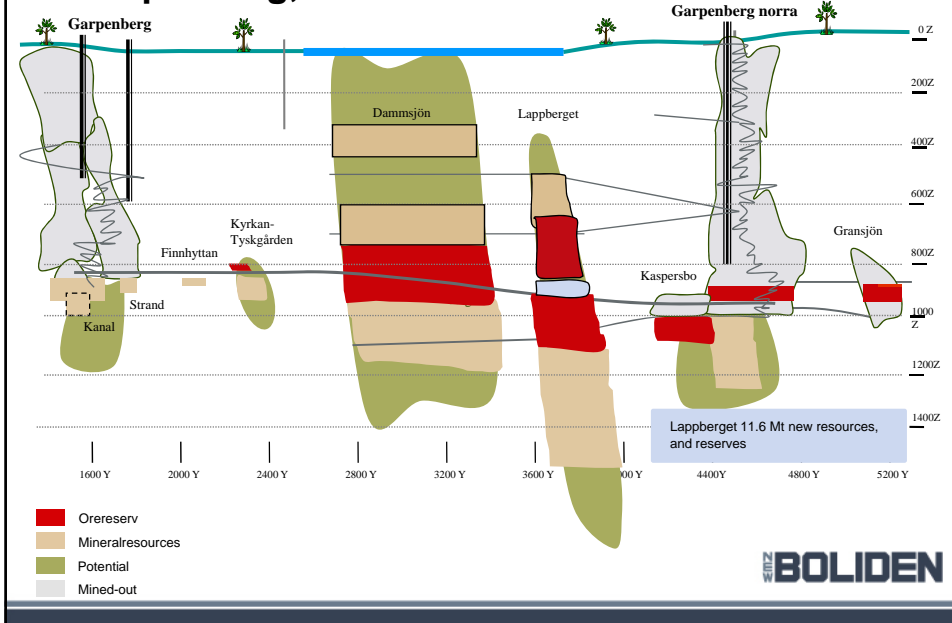


Development of Lappberget, 2006

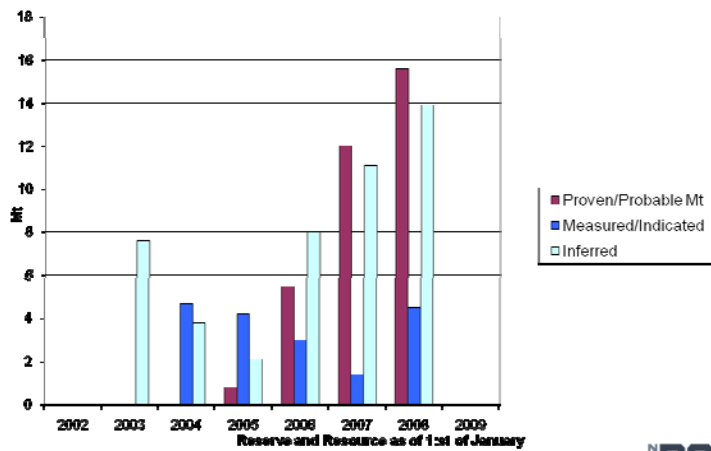




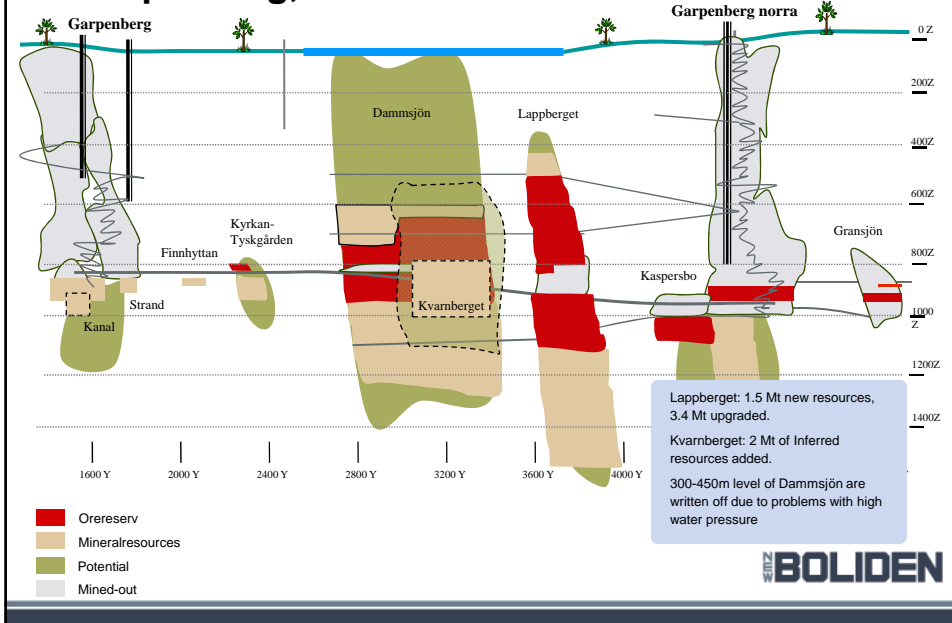
Garpenberg, 1/1 2008



Development of Lappberget, 2008



Garpenberg, 1/1 2009



Development of Lappberget, 2009

