



**Capital Markets Day
2 September 2009**

Boliden Area 2010
Staffan Sandström
General Manager Boliden Area

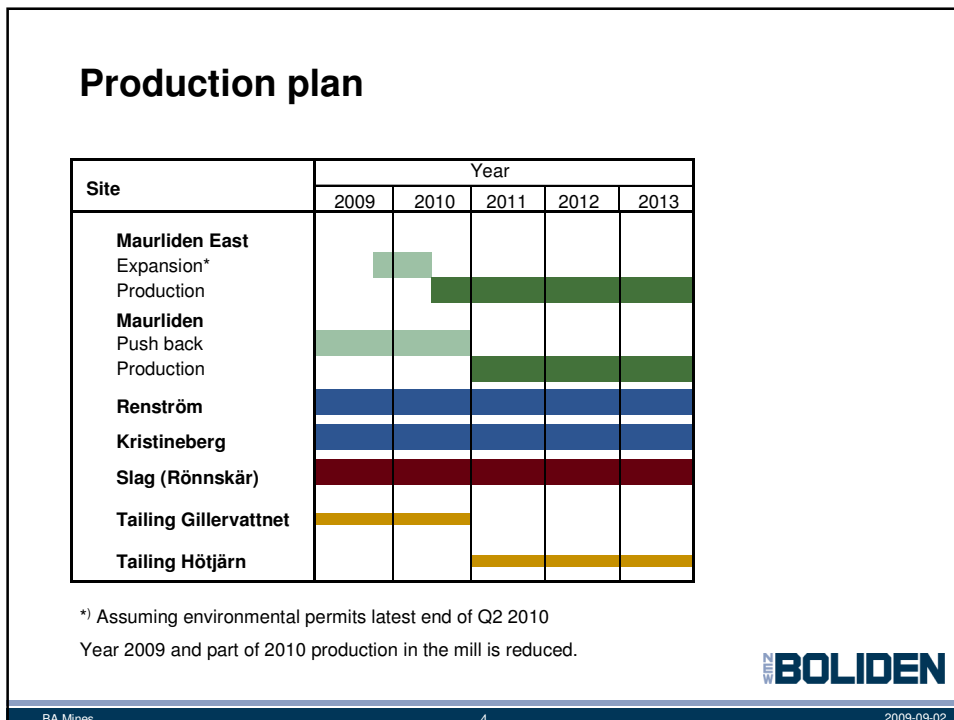
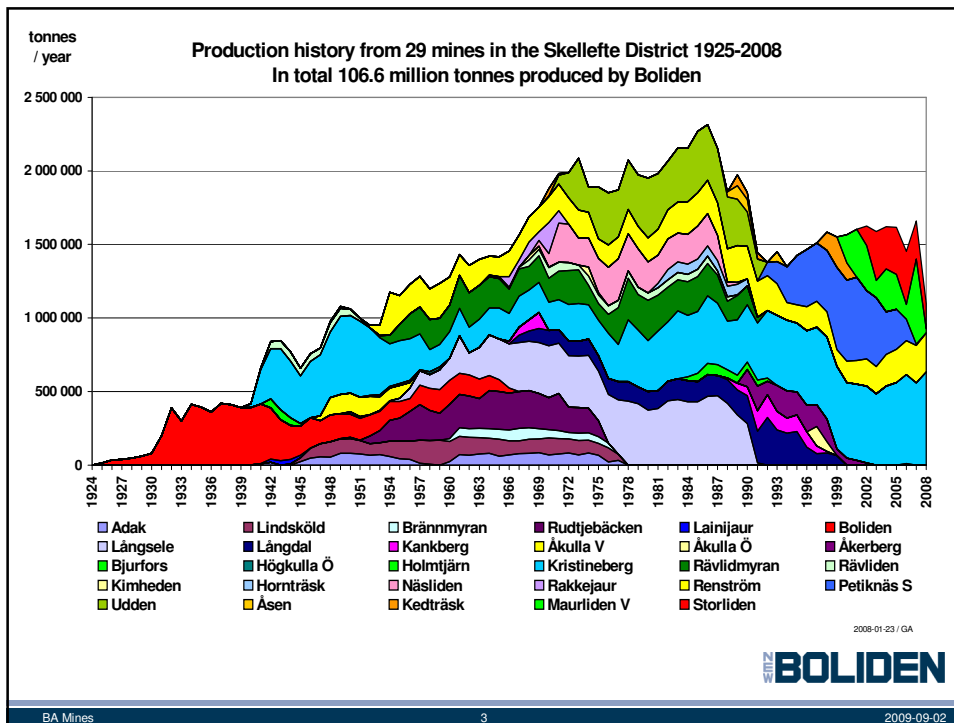


Boliden Area Operations

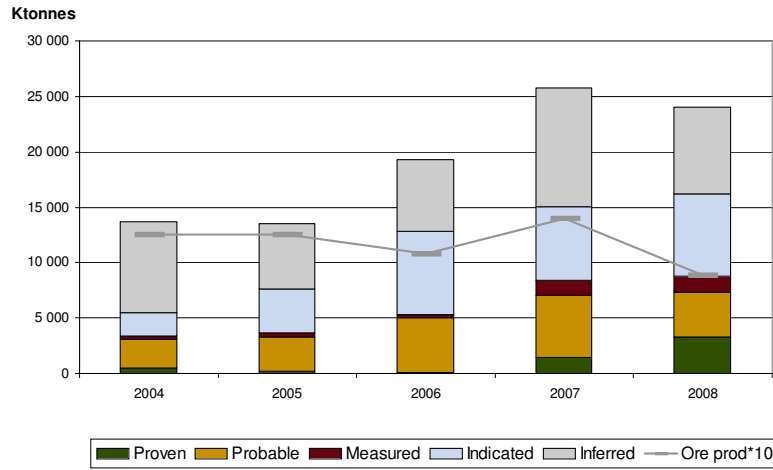
- Two underground mines - Renström and Kristineberg
- One open pit mine, Maurliden
- A concentrator and a gold leaching plant.
- All mines have complex sulphide ores containing zinc, copper, lead, gold and silver.
- Production 2008
 - Ore 1,062 ktonnes
 - Slag 293 ktonnes
- Metal

– Copper (t)	9,413
– Lead (t)	1,896
– Zinc (t)	38,479
– Silver (kg)	47,671
– Gold (kg)	1,141



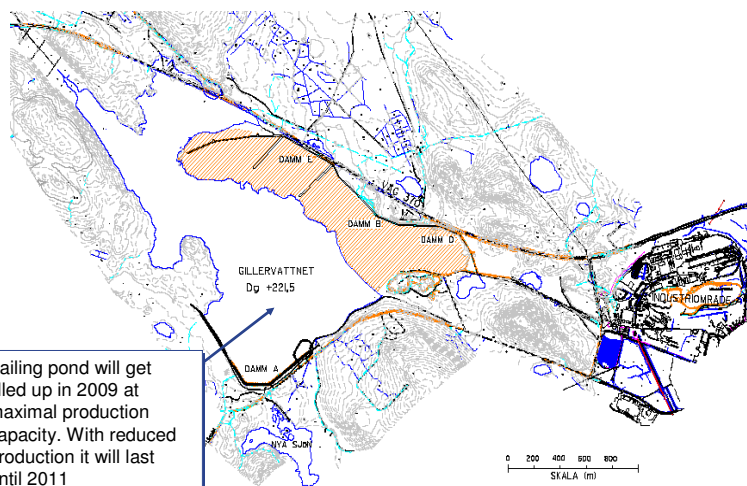


Boliden Area – Production and ore reserves



BOLIDEN

Gillervattnet – Existing tailing pond



BOLIDEN

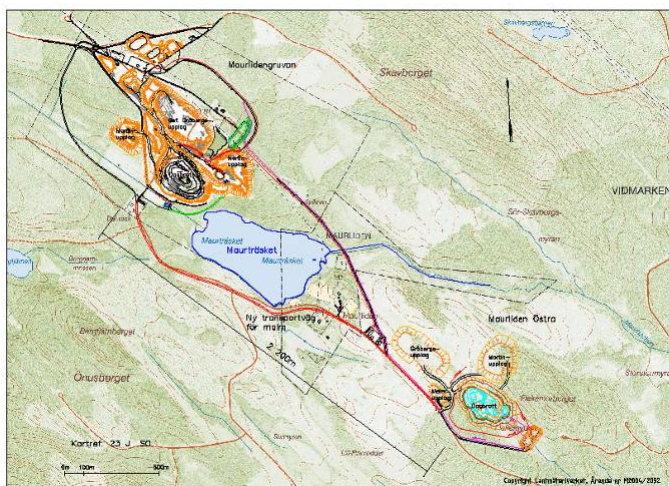
Hötjärn – New tailing pond



Construction of the new pond started in 2008 – Crossroads for the Boliden Area

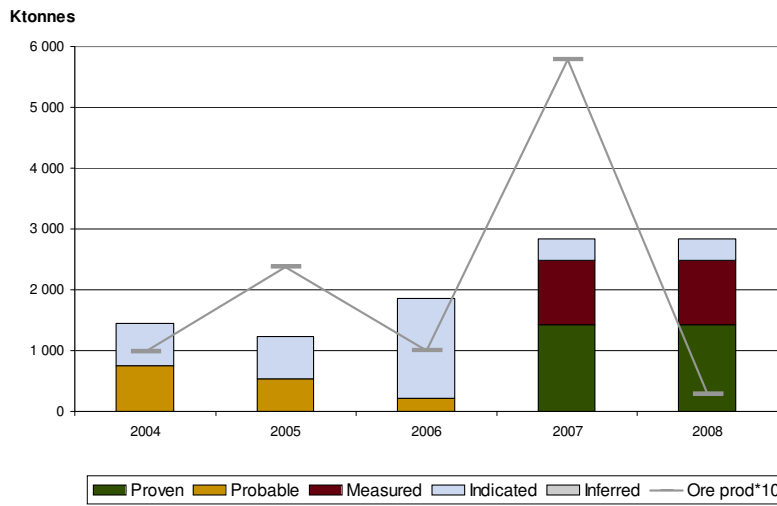
BOLIDEN

Maurleden mines



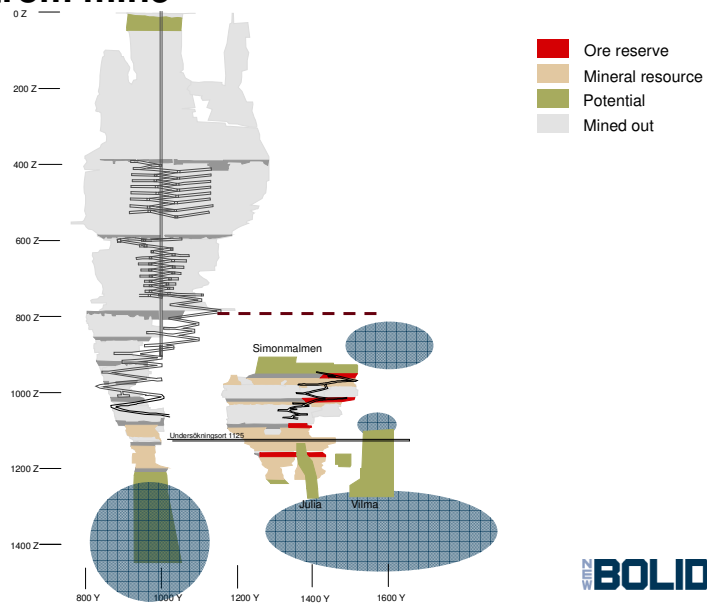
BOLIDEN

Maurliden - Production and ore reserves



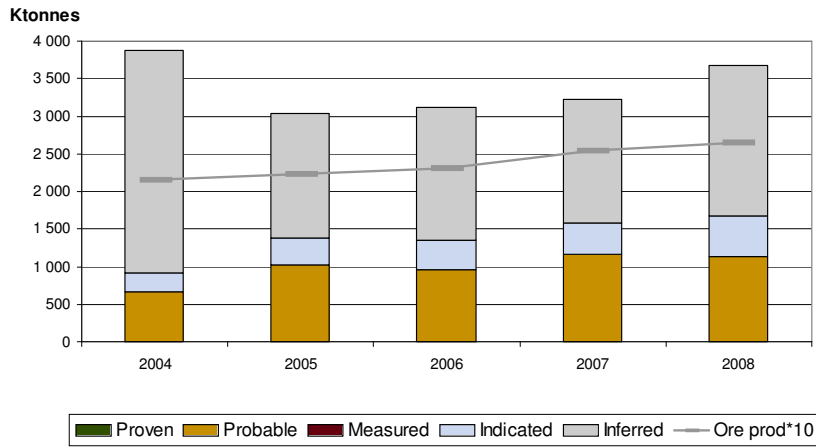
BOLIDEN

Renström mine



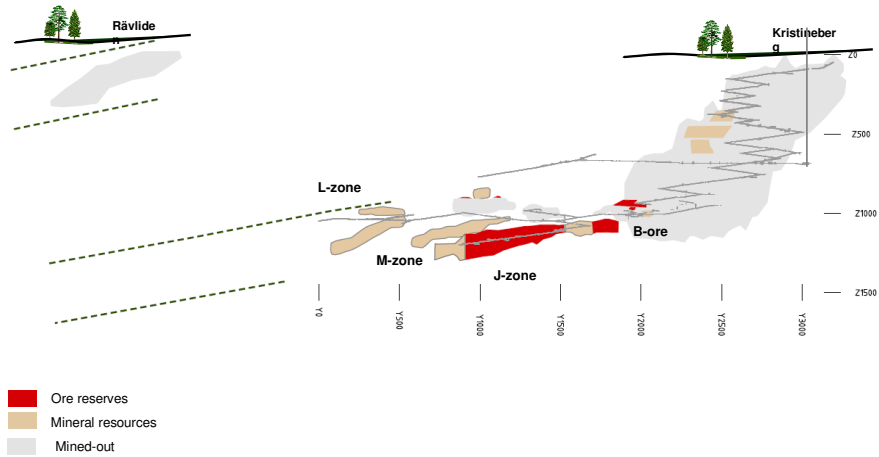
BOLIDEN

Renström - Production and ore reserves



BOLIDEN

Kristineberg mine

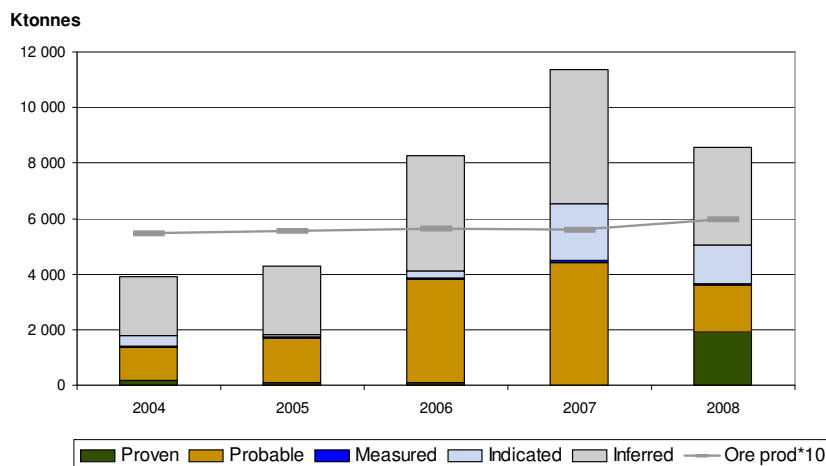


BOLIDEN

Kristineberg mine (horizontal projection)



Kristineberg - Production and ore reserves



Production (indicative only)

