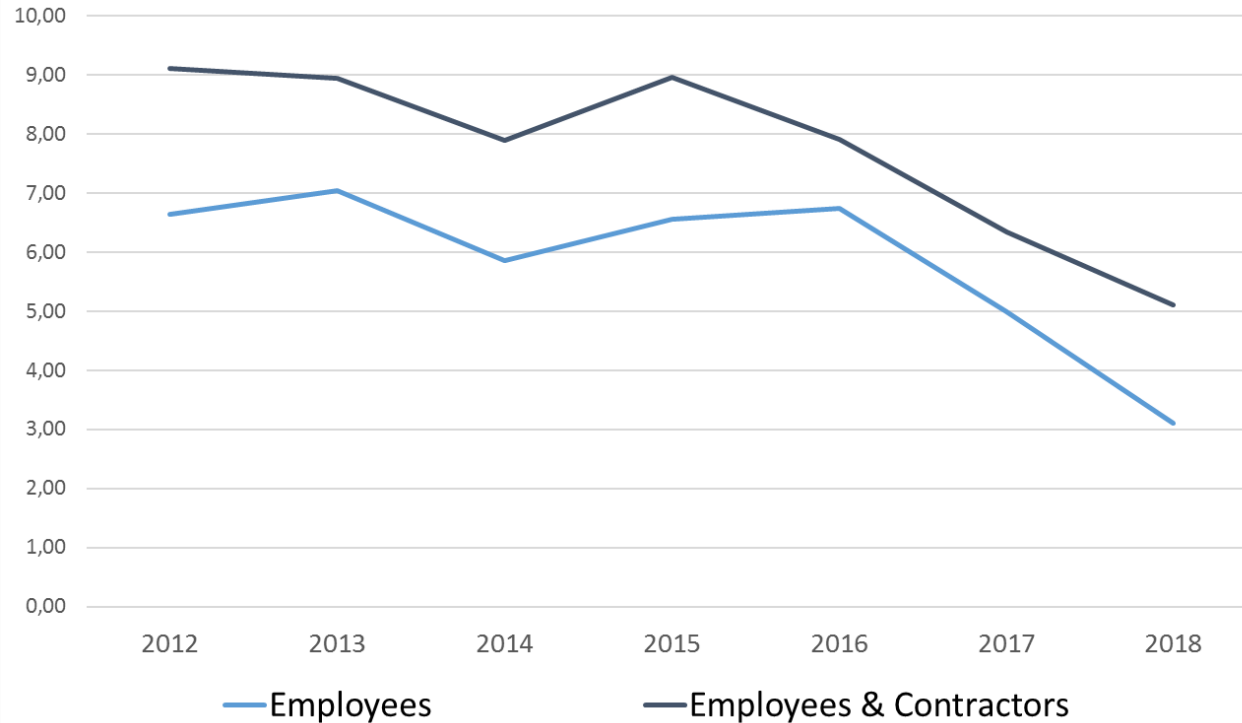


# Further strengthening our position within sustainability

Åsa Jackson, Senior Vice President Corporate Responsibility

# Safety first

## Lost Time Injury Frequency



LTI Frequency is the number of LTIs per million working hours



Boliden Co-workers

- We have reduced accident rates by 44% between 2012-2018\*
- Moving towards a more proactive approach to further strengthen the safety culture

\* 2012 is the base year for our EHS performance indicators

# Improved environmental performance combined with increased production

## Emissions between 2012-2018\*

- Metals to water decrease by 64%
- Metals to air, unchanged since 2012
  - decrease by 16% in 2018
- Carbon dioxide intensity decrease by 17%



Garpenberg mine area

\* 2012 is the base year for our EHS performance indicators

# Dam management and safety

**10**

Locations

**8**

Active tailings storage facilities

**11**

Water storage facilities

## Manual

- Daily monitoring
- Inspections
- Data evaluation and reporting
- Audits
- External international reviews

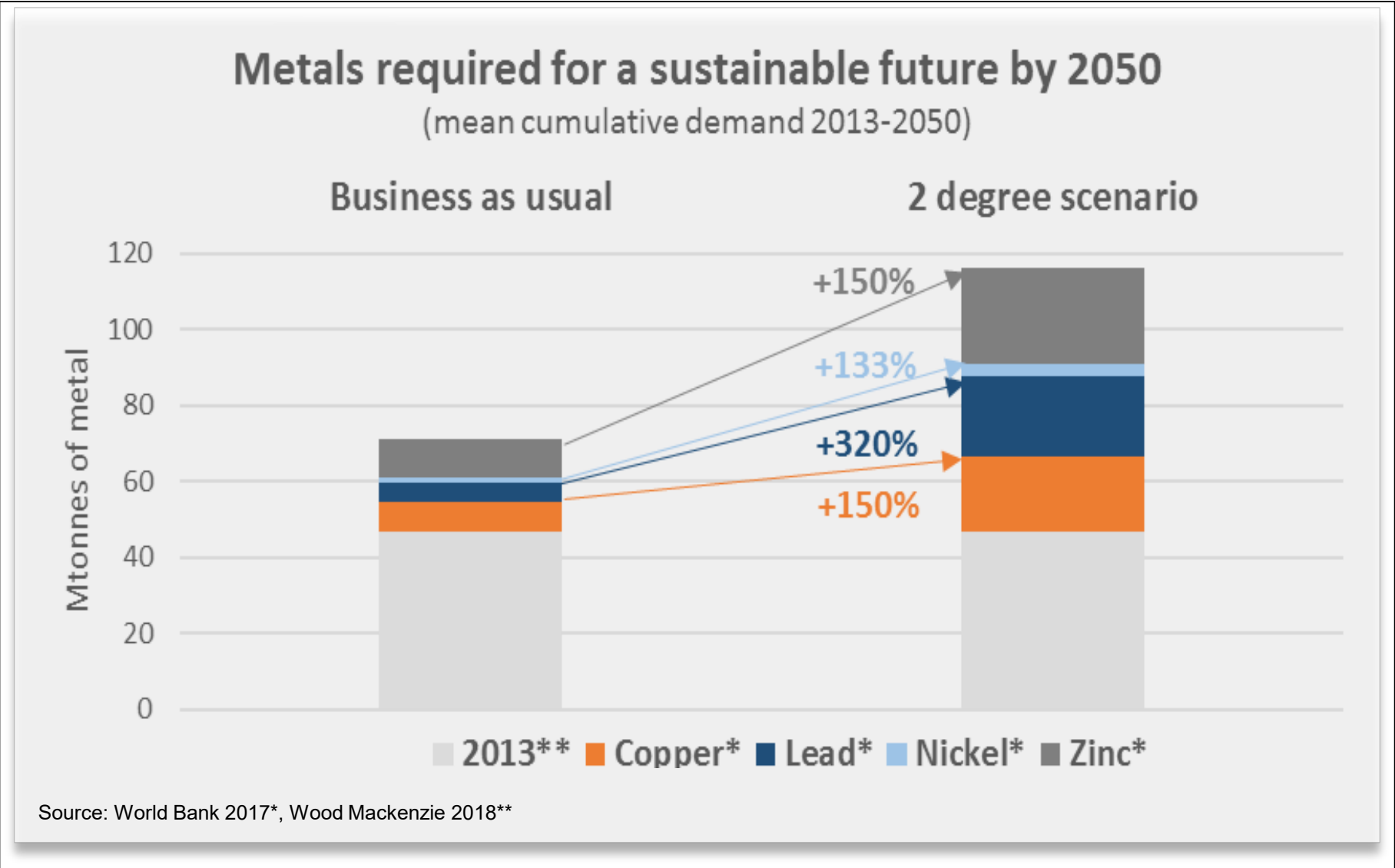
## Technology

- Design criteria
- Construction criteria
- Instrumentation with automated data collection
- Online measurements with pre-set alarms

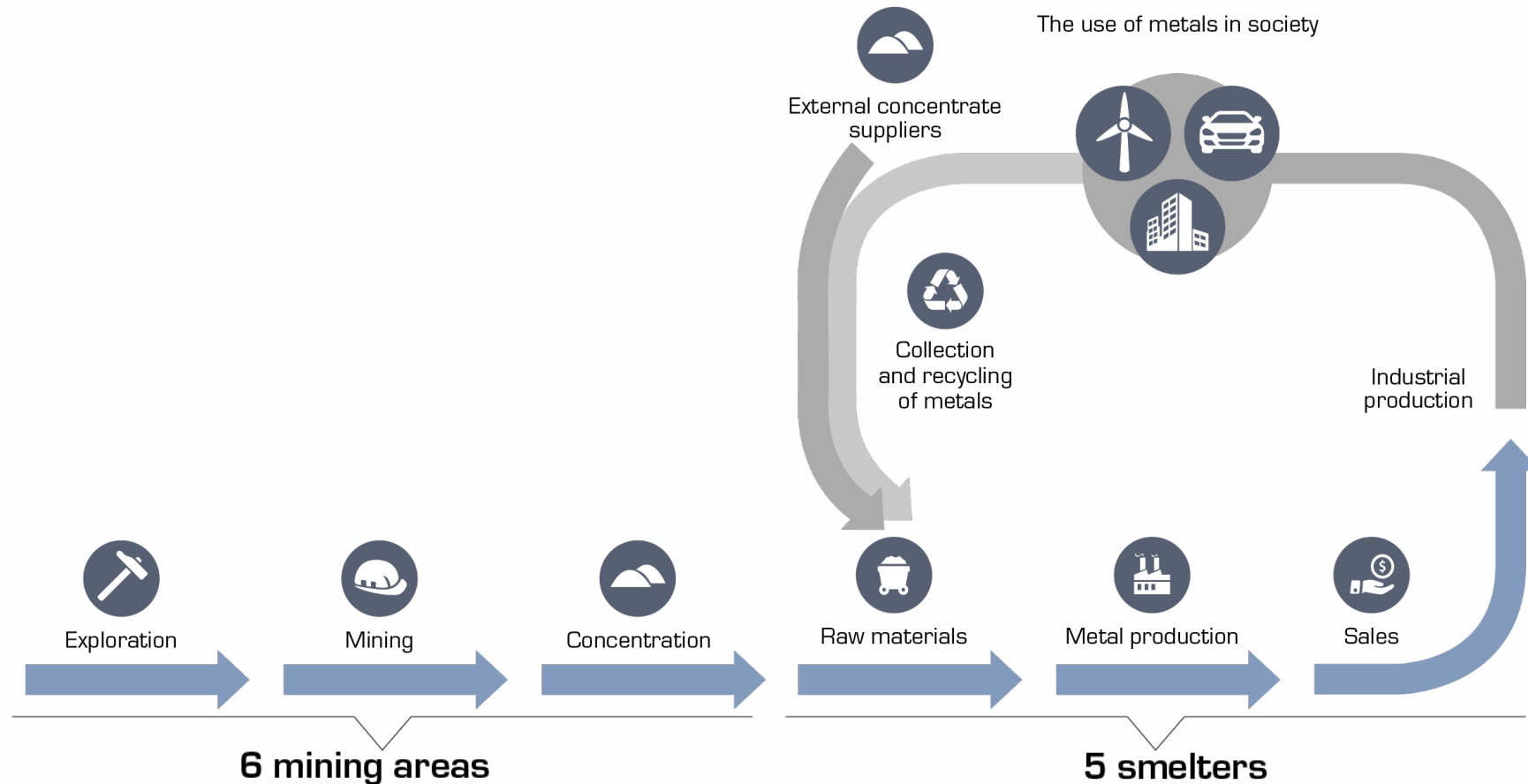
## Organization

- Consequence classification
- Organization and management system
- Emergency preparedness and response plans

# Base metals – an essential component for a sustainable future



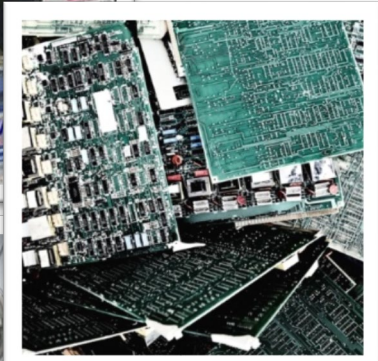
# A sustainable business model – part of a circular economy



# We are a front runner in recycling



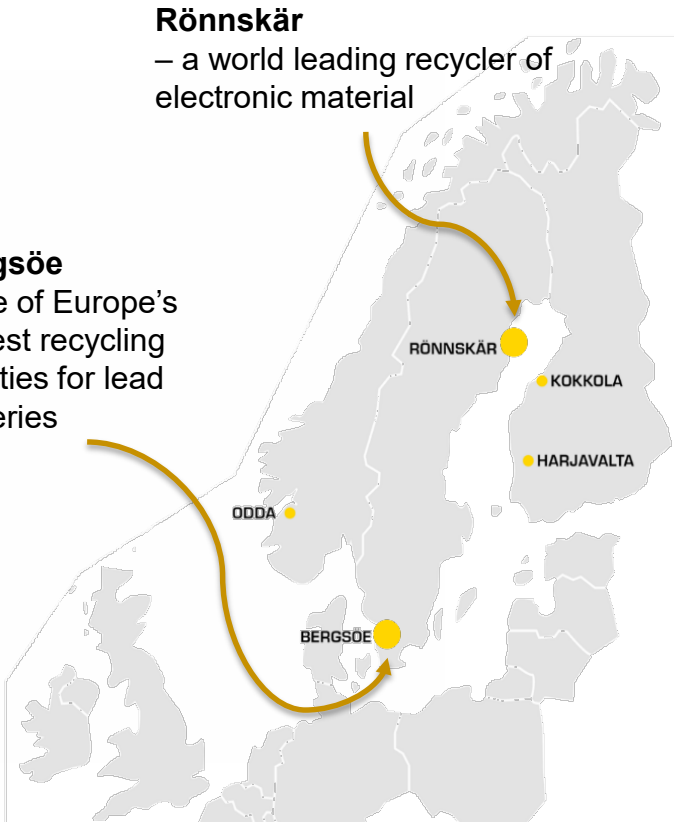
Four million car batteries per year



E-scrap equivalent to two million mobile phones per day



Steel mill dust  
Zinc ashes  
Incinerated waste



# We are securing value chain responsibility...



Kokkola port



# ...and we are taking long term responsibility for our metal supply

- Just above 30 active and decommissioned mines
- 4 BSEK reclamation reserve
- Net reclamation liability is included in our capital structure goal\*



Boliden Area wetland

\*Note! On February 13, 2019 Boliden specified its capital structure goal; the sum of net debt and net reclamation liability shall, comprise approximately 20% of equity in an economic upturn.



**Base metals are essential components for a sustainable society -  
Boliden is a key supplier**

